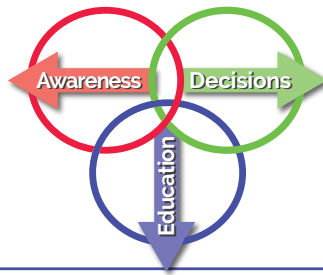
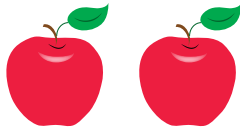


# DIABETES AWARENESS



# HEALTHY DECISIONS

IN THE U.S., IT IS ESTIMATED THAT **26 MILLION** PEOPLE HAVE **DIABETES** AND **7 MILLION** DO NOT KNOW THEY HAVE IT.



## DID YOU KNOW?

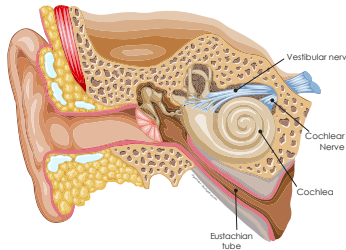


Hearing loss occurs almost **twice** as often in adults who have **diabetes**

than in those who don't.

## POSSIBLE CAUSES?

Research indicates...



high blood sugar levels may damage the inner ear's small blood vessels and nerves, reducing the ability to hear well.

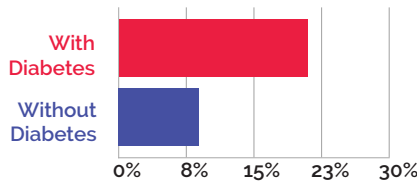


### TALK TO YOUR CARING DOCTOR

Do you have diabetes or a family history that may increase your risk of diabetes-related hearing loss?

**Our expert advice can help!**

PERCENTAGE OF POPULATION WITH MILD OR GREATER HEARING IMPAIRMENT



Mild or greater hearing impairment of low or mid frequency sounds in the worse ear

### GET A PROFESSIONAL HEARING EVALUATION ANNUALLY TO DISCOVER:

- If you have hearing loss or are at risk
- The type of hearing loss you may have
- How your hearing health and quality of life can be improved



To learn more, please visit:  
[www.diabetes.org](http://www.diabetes.org)

[www.HearingAidCompany.com](http://www.HearingAidCompany.com)



## ARE YOU AT RISK FOR DIABETES-RELATED HEARING LOSS?

### ✓ Check all that apply

- I have difficulty understanding speech in the presence of background noise or in a crowded restaurant.
- I avoid social situations that require me to participate in conversations.
- I avoid the movies or theater because I miss so much.
- I have greater difficulty understanding females and children.
- My family and friends complain that I am not hearing accurately.
- Others notice that I turn the volume on my television or radio too loud.
- I have difficulty conversing on the telephone.
- I ask others to repeat themselves often during conversations.

### ✓ Questions I'd like to ask my hearing health professional

1. \_\_\_\_\_

2. \_\_\_\_\_

3. \_\_\_\_\_

13310 Leopard Street, Suite 22  
Corpus Christi, TX 78410  
(361) 241-7511

216 South 14th Street, Suite D  
Kingsville, TX 78363  
(361) 221-9224

2012 North Saint Mary's Street, Suite B  
Beeville, TX 78102  
(361) 354-5455



**HEARING AID  
COMPANY**  
O F T E X A S

601 East Main Street, Suite 275  
Alice, TX 78332  
(361) 668-3089

2001 West Expressway 83  
La Feria, TX 78559  
(956) 797-3839

7058 Lakeview Haven, Suite 102  
Houston, TX 77095  
(855) 300-4327

6468 Holly Road  
Corpus Christi, TX 78412  
(361) 814-3487



[www.HearingAidCompany.com](http://www.HearingAidCompany.com)

HEALTH Scapes<sup>®</sup>  
©2014 HDI